



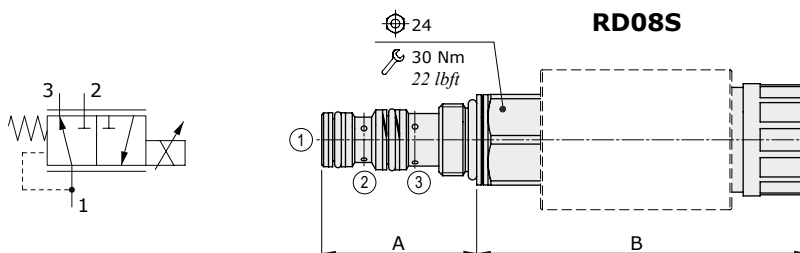
### RD08S-RD08T type pressure reducing valves - 3 way

- Solenoid proportional type, direct acting
- With relieving (NO)
- Spool type

Technical specifications and diagrams are measured with mineral oil of 46 cSt viscosity at 40°C (104°F) temperature.

	RD08S	RD08T
Nominal flow	4 l/min (1.05 US gpm)	12 l/min (3.17 US gpm)
Max. pressure	210 bar (3050 psi)	
Oil leakage	-	
Fluid	mineral based oil	
Viscosity	10-200 cSt	
Max level of contamination	18/16/13 ISO4406	
Fluid temperature	with NBR seals with FPM seals	from -20°C (-4°F) to 80°C (176°F) from -20°C (-4°F) to 100°C (212°F)
Environmental temp. for working conditions	from -40°C (-40°F) to 100°C (212°F)	
Cavity	SAE 08/3	SAE 8/3
Coil type*	MSM 19	
Nominal voltages	12 VDC - 24 VDC	
Power rating	21.6 W (12 VDC) - 22.5 W (24 VDC)	
Max control current	12 V -> 1.25 A - 24 V -> 0.68A	
Dither frequency	150 Hz	
Hysteresis	≤4%	
Weight	0.492 kg (1.08 lb)	1.140 kg (0.79 lb)

NOTE - For different conditions, please contact Walvoil Sales Dpt. - For coils further features see from page 206.



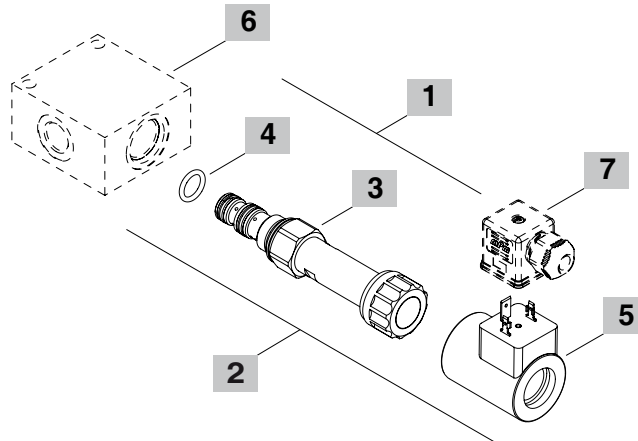
Valve type	A		B	
	mm	in	mm	in
RD08S	41	1.61	87.5	1.27
RD08T	41	1.61	97	1.81

## Ordering codes and description composition

### RD08S/003B



### RD08S/023B



### 1 Cartridges

TYPE	CODE	DESCRIPTION
<b>RD08S/003B</b>	ORD08002025	Pressure range <b>1</b>
<b>RD08T/001B</b>	ORD08002016	Pressure range <b>2</b>

### 2 Complete cartridges

TYPE	CODE	DESCRIPTION
<b>RD08S/023B</b>	ORD08002023	Pressure range <b>1</b> , 12VDC
<b>RD08T/021B</b>	ORD08002024	Pressure range <b>2</b> , 12VDC

### 3 Pressure range

TYPE	DESCRIPTION
<b>1</b>	Pressure range 5÷45 bar (72.5÷652.5 psi)
<b>3</b>	Pressure range 5÷35 bar (72.5÷507.5 psi)

### 4 Seals

TYPE	DESCRIPTION
<b>B</b>	<b>NBR (Buna)</b> o-ring seals, std configuration
<b>V</b>	<b>FPM (Viton)</b> o-ring seals, contact Sales Dept.

### 5 Coils

TYPE	CODE	DESCRIPTION
<b>2) MSM 19 12VDC</b>	4SL5000128	12VDC-ISO4400 coil
<b>4) MSM 19 24VDC</b>	4SL5000247	24VDC-ISO4400 coil

For complete coils list see page 206

### 6 Valve body

TYPE	CODE	DESCRIPTION
<b>SAE 08/3-G 3/8</b>	3CC0830C11	Aluminium body for cavity 8 valve, G 3/8 std thread

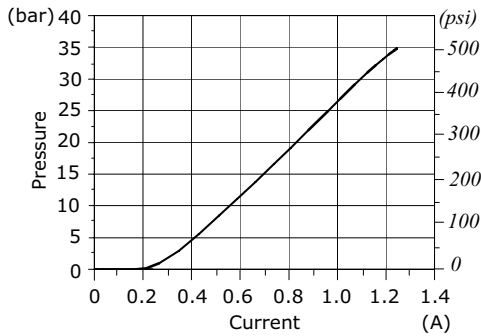
Note: aluminium body can stand up to 210 bar (3050 psi)  
For steel bodies or different threading see from page 217

### 7 Connector

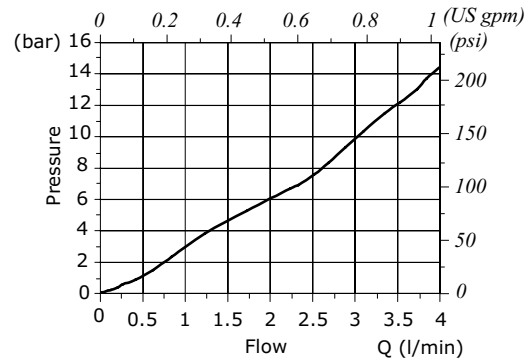
TYPE	CODE	DESCRIPTION
<b>ISO4400</b>	4CN1009995	Connector

For complete connectors list see from page 206

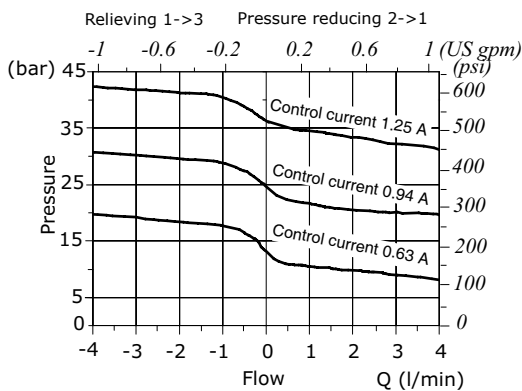
**RD08S pressure reducing vs. control current**  
12 VDC power supply



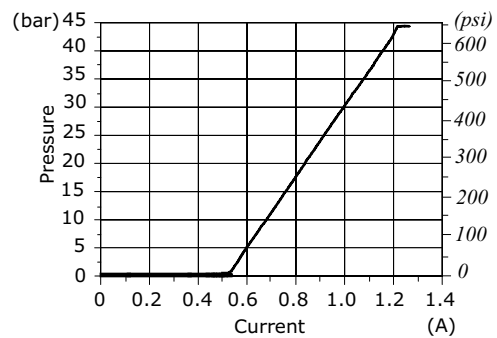
**RD08S pressure drop vs. flow 2->1**



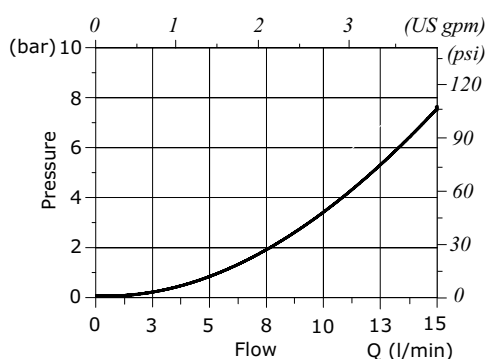
**RD08S reducing/relieving pressure vs. flow**  
for % of control current



**RD08T pressure reducing vs. control current**  
12 VDC power supply



**RD08T pressure drop vs. flow 2->1**



**RD08T reducing/relieving pressure vs. flow**  
for % of control current

